

Wall-mounted type

Built-in WLAN adapter model
Designer Range
High Spec & Design



KG Series

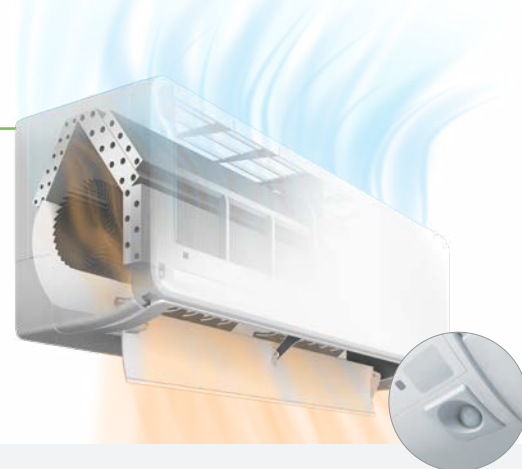


High energy saving

Top class high efficiency is achieved by high efficient lambda-shaped heat exchanger, large cross flow fan and new refrigerant.

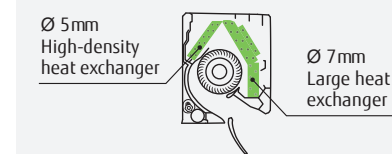
Rank **A+++*** SEER **9.80*** SCOP **5.20***

*07/09/12 models *07 model *07/09/12 models



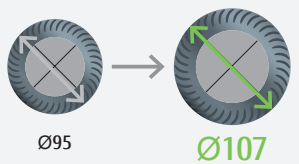
Hybrid-heat exchanger

The large hybrid heat exchanger has greatly improved the heat exchange efficiency to achieve top-level SEER and SCOP.



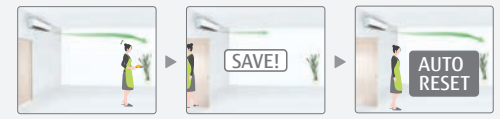
Ø107 Large cross-flow fan

The large-diameter fan generates air volume efficiently even at reduced power.



Human sensor

The Human sensor monitors the movements of people in a room and operates the air conditioner at a lower capacity when people leave the room. When people come back to the room, it automatically returns to the previous operating mode.



Comfortable airflow & Quiet operation

The large louver and the new air-blowing structure create a comfortable air flow that spreads all the way down to the user's feet with quiet operation.



Smart device control

A WLAN adapter is included as standard equipment. By installing the AIRSTAGE mobile app on your smart device, you can check and control the operating status of the air conditioner from anywhere indoors or outdoors.

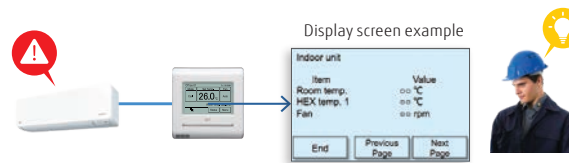
* See page C-020 for details on smart device control.



Refrigerant cycle monitor (Option)

Wired Remote Controller (Touch Panel) will support to display some sensor values for maintenance and service support.

*Wired remote controller (UTY-RNRY25 or UTY-RVRY) is required.



Model: ASEH07KGTG / ASEH09KGTG / ASEH12KGTG / ASEH14KGTG



WLAN adapter (Built-in)



Wireless RC



Specifications

Model name	Indoor unit		Outdoor unit		ASEH07KGTG	ASEH09KGTG	ASEH12KGTG	ASEH14KGTG
	AOEH07KGGC		AOEH09KGGC		AOEH12KGGC	AOEH14KGGC	AOEH14KGGC	AOEH14KGGC
Power Source	Single phase, ~230 V, 50 Hz							
Capacity	Cooling	Rated	kW	2.0	2.5	3.4	4.2	
		Min.-Max.		0.9-3.3	0.9-3.6	0.9-4.1	0.9-4.5	
	Heating	Rated	2.5	2.8	4.0	5.4		
Input Power	Cooling/Heating	Min.-Max.	kW	0.9-5.2	0.9-5.4	0.9-6.1	0.9-6.4	
		EER	W/W	5.00	4.55	3.91	3.44	
COP	Cooling/Heating	Rated	W/W	5.00	4.67	4.40	3.72	
		Pdesign	kW	2.0 / 2.3	2.5 / 2.4	3.4 / 2.5	4.2 / 4.0	
SEER	Cooling	Rated	W/W	9.80	9.40	8.80	8.00	
		SCOP	W/W	5.20	5.20	5.20	4.60	
Energy Efficiency Class	Cooling/Heating (Average)	Cooling	A+++	A+++	A+++	A++		
		Heating (Average)	A+++	A+++	A+++	A++		
Max. Operating Current	Cooling/Heating	A	6.5 / 9.0	6.5 / 9.0	6.5 / 9.0	9.0 / 10.5		
Annual Energy Consumption	Cooling/Heating	kWh/a	71	93	135	184		
		Moisture Removal	l/h	618	646	673	1,217	
Sound Pressure Level	Indoor (Cooling/Heating)	H/M/L/Q	dB(A)	36 / 32 / 29 / 19	38 / 34 / 29 / 19	40 / 35 / 30 / 19	43 / 36 / 30 / 20	
		High	38 / 34 / 31 / 20	39 / 34 / 31 / 20	42 / 38 / 33 / 21	44 / 39 / 33 / 24		
Sound Power Level	Indoor (Cooling/Heating)	High	dB(A)	42 / 43	44 / 45	50 / 50	50 / 50	
		High	49 / 51	52 / 52	56 / 58	57 / 59		
Airflow Rate	Indoor/Outdoor (Cooling/Heating)	High	m ³ /h	570 / 1,390	640 / 1,480	680 / 1,800	750 / 1,800	
		High	610 / 1,350	630 / 1,420	750 / 1,690	780 / 1,690		
Net Dimensions	Indoor	mm	270 × 834 × 215	270 × 834 × 215	270 × 834 × 215	270 × 834 × 215		
		Outdoor	mm	542 × 799 × 290	542 × 799 × 290	542 × 799 × 290	542 × 799 × 290	
Weight	Indoor	kg	10	10	10	10		
		Outdoor	kg	30	30	31	32	
Connection Pipe Diameter (Liquid/Gas)	mm	6.35 / 9.52	6.35 / 9.52	6.35 / 9.52	6.35 / 9.52			
		13.8 / 15 to 16.8	13.8 / 15 to 16.8	13.8 / 15 to 16.8	13.8 / 15 to 16.8			
Drain Hose Diameter (I.D./O.D.)	m	20 (15)	20 (15)	20 (15)	20 (15)			
Max. Pipe Length (Pre-Charge)	°CDB	-10 to 50	-10 to 50	-10 to 50	-10 to 50			
Operating Range	Cooling/Heating	°CDB	-15 to 24	-15 to 24	-15 to 24	-15 to 24		
		Refrigerant	Type (Global Warming Potential)	R32 (675)	R32 (675)	R32 (675)	R32 (675)	
Refrigerant	Charge	kg (CO ₂ eq-T)	0.75 (0.506)	0.75 (0.506)	0.85 (0.574)	0.85 (0.574)		

Optional parts

* For optional parts compatibility of Intesis devices, please refer to the optional parts compatibility list page C-050 to C-053 and C-066.

- Wired Remote Controller (Design type): UTY-RVRY
- Compact wired remote controller: UTY-RCRYZ1
- Wired remote controller (touch panel): UTY-RNRY25
- Wired remote controller: UTY-RLRY
- Simple remote controller (without operation mode): UTY-RHRY
- Simple remote controller: UTY-RSRY
- External switch controller: UTY-TERX
- Communication kit: UTY-TWRXZ2
- External connect kit: UTY-XWZX
- Simple remote controller: UTY-RSRY
- External switch controller: UTY-TERX
- Communication kit: UTY-TWRXZ2
- External connect kit: UTY-XWZX
- External connect kit: UTY-XWZX25
- Network Converter for single split (DC power supply type): UTY-VTGX
- Network Converter for single split (AC power supply type): UTY-VTGXV
- Silver Ion filter: UTR-FA16-5
- External input and output PCB*: UTY-XCSXZ2

*1 It is required when 2 or more external input and output ports are used.

Dimensions

(Unit: mm)

